

Cimitiere Plains Solar Farm



Cimitiere Plains Solar Farm



Project overview

Hello and welcome to the first newsletter of the Cimitiere Plains Solar Farm, proposed for five kilometres north-east of George Town.

If approved, the 288-MW solar farm will be on predominantly cleared agricultural land either side of Soldier Settlement Road.

We are ib vogt, experienced global solar farm developers with seven operational solar farms in Australia, which you can read more about in the Introducing ib vogt story on page two.

The proposed Cimitiere Plains Solar Farm will include two solar arrays made up of about 613,00 panels, approximately 80 inverters, an on-site substation and about six kilometres of overhead 110 kV powerline, which will connect the project to the existing George Town substation in Bell Bay.

At a glance



Project capacity

288 megawatts (MWs) – enough to power 100,000 homes



Site size

Approximately 420 hectares



Site location

About 5 kilometres north-east of George Town, either side of Soldier Settlement Road



Number of panels

Approximately 613,000



Connection

George Town substation



Employment

- 300 people at the peak of construction
- About 10 permanent jobs once operational



Construction duration

12-18 months



Local Government Authority

George Town Council



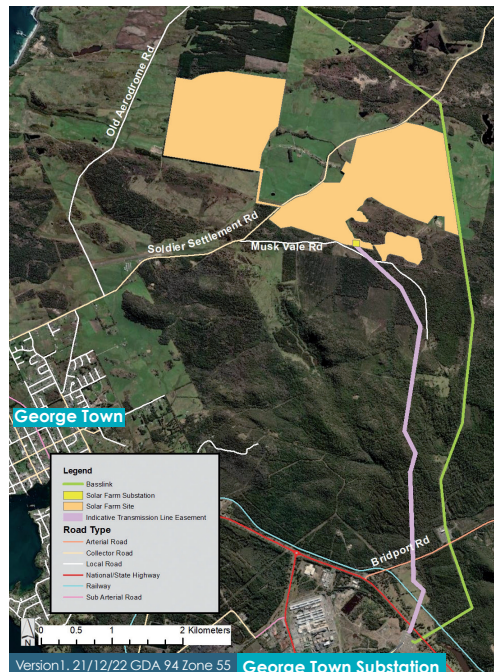
Project status

Proposed, studies underway



Assessment timeline

- **March 2023:**
Community Open Days
- **May 2023:**
Submit Development Application to the George Town Council
- **November 2023:**
Development Approval decision
- **End 2025:** If approved, commence construction of solar farm



Source: Esri, Maxar, Earthstar Geographics, and the GIS User Community

The project is going through an Environmental Impact Assessment process, designed to minimise environmental impacts from development.

As part of this, ib vogt is undertaking a variety of studies including:

- Biodiversity,
- Aboriginal cultural heritage and historic heritage,
- Traffic,
- Noise, and
- Visual impact (including reflection, glare etc).

These factors have all been considered in the design of the project.

For example, all threatened vegetation communities and cultural heritage sites were avoided in the selection of the transmission line route. More information on these studies will be available at the community open days (which you can read more about on page two of this newsletter).

Access to the solar farm will be from Soldier Settlement Road and Musk Vale Road. A security fence will surround the panels and the substation. Sheep will be grazed underneath the panels and the agricultural productivity of the land will be similar to its current levels.

The project will employ up to 300 people at the peak of construction, with many of these from the local area and Launceston.

Construction will take about 12 to 18 months and 10 permanent jobs will be created when the solar farm is operational.

The solar farm will be able to power about 100,000 homes.

Project benefits

- Will power about 100,000 homes
- 10 permanent jobs
- Up to 300 people during construction
- Inexpensive source of renewable power for Tasmanian homes and industry
- Will support Tasmania's excellent hydropower resources

Introducing ib vogt

ib vogt is a German company that specialises in developing solar farms. Headquartered in Berlin, we have been operating in Europe since 2002 and opened our Australian operations in 2016.

We employ more than 600 people throughout Africa, Europe, Asia and America and have built more than three gigawatts (GWs) of solar farms to date.

In Australia, we have five employees and are based in Sydney. We are experienced in the Australian renewable energy sector and have so far completed the development of seven solar farms in Australia:

New South Wales:

- Sebastopol Solar Farm – 90 MW AC
- Yanco Solar Farm – 60 MW AC
- Dunedoo Solar Farm – 55 MW AC

Australian Capital Territory:

- Williamsdale Solar Farm – 11 MW AC

Victoria:

- Wunghnu Solar Farm – 75 MW AC
- Carisbrook Solar Farm – 74 MW AC
- Kerang Solar Farm – 30 MW AC

At each of our project locations we have worked with the community throughout the development phases and provided sponsorship and support to chosen local groups and initiatives.

For more information, please see our website: www.ibvogt.com



Contact Us

If you would like further information about the Cimitiere Plains Solar Farm please contact us:

Thomas Strobel
Development Manager
ib vogt
Level 6, 201 Kent Street,
Sydney NSW 2000

Tel: 0405 695 643
Email: info@cimitiereplainssolarfarm.com.au

Solar energy

Solar is now one of the least expensive forms of new energy, with improvements in solar cell technology and manufacturing over the last decade meaning there have been enormous decreases in production costs.

Solar farms typically have a lifespan of 30 years and agricultural operations, such as sheep grazing, are able to continue while the farm is operational.

Electricity generated by solar can be backed up by Tasmania's excellent hydropower resources to provide an inexpensive source of renewable power for Tasmanian homes and industry. This affordable, renewable energy is critical to maintain existing industry and attract new industries to the area.

Community open days

Ib vogt would like to invite you to our community information sessions in March.

When:

Friday 17 March - 10am - 2pm
Saturday 18 March - 10am - 2pm

Where:

York Cove Holiday Hotel
Conference Room
(near The Crazy Duck)

Project information will be on hand and ib vogt staff will be available to discuss the project. Your feedback is important and will be fed into the environmental assessment process.

